

» System 2000

Alu / Steel

Panel Height: 2,70m / 1,35m

Steel

Alu



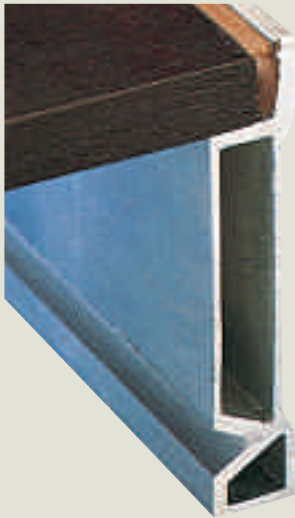
AL 2000

Panel Height: 2,70m / 1,35m – 60 kN/m²

Aluminium
60 kN/m²

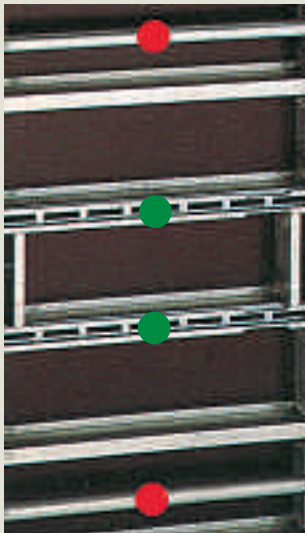


One system - many advantages



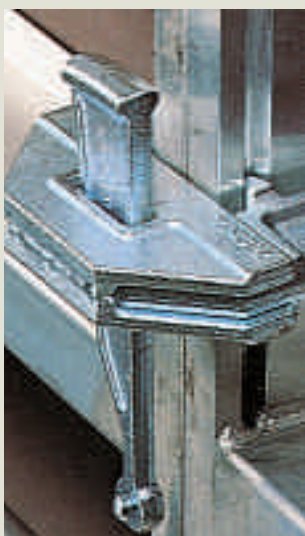
Hollow profile

- Extremely light
- Extremely stiff
- Minimized volume



Easy handling

- handle bars
- plane profiles



Quick and safe panel joint



Stacking pallet

For best transport and stocking



Quality plywood 15 mm

Multiple layers of birch, coated with phenolic resin, 240gr/m²

or

Plastic coated plywood

- Up to 3 times higher number of re-use cycles
- Perfect concrete surface after more than 100 cycles

The greatest amongst light systems

Easy to
assemble
by hand...



...or
large area operations
by crane

FORMWORK AL 2000 «



Lift shafts

Foundations

Basements

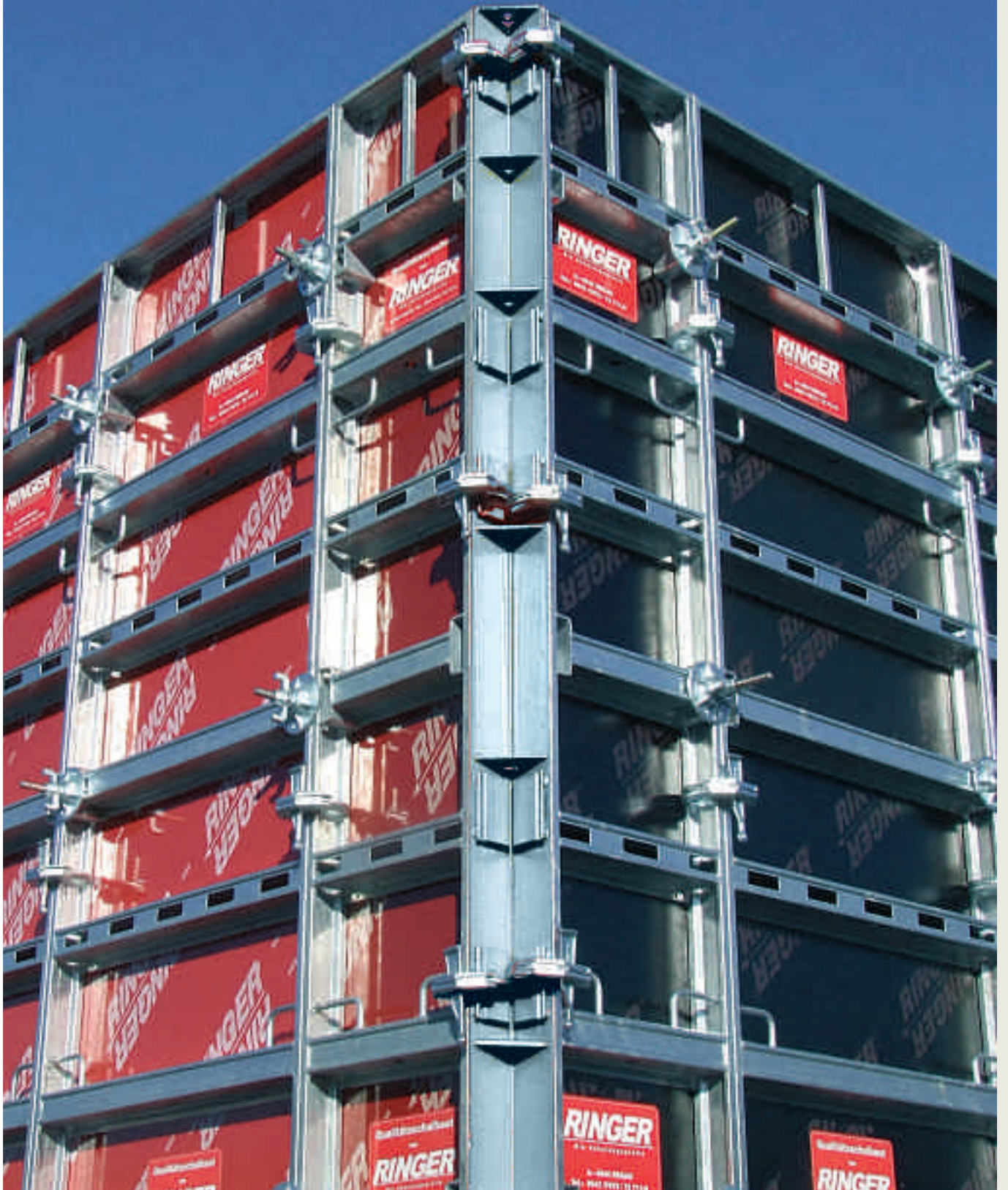
Every shape is possible due to optimal system grid and wide range of accessories



ST 2000

Panel Height: 2,70m / 1,35m – 60 kN/m²

Steel hot dip galvanized
60 kN/m²



The strongest amongst light systems



Profile:
- Hot-dip galvanized finish
- Torsion proof
- Minimum volume



...even for the site without crane



Hand grips for optimised handling



Quality plywood 15 mm

Multiple layers of birch, coated with phenolic resin, 240gr/m²

or

Plastic coated plywood

- Up to 3 times higher number of re-use cycles
- Perfect concrete surface after more than 100 cycles



Quick and safe panel joint

The strongest amongst light systems



Easy to
assemble
by hand...

...or
large area
operations
by crane



FORMWORK ST 2000 «



Foundations

Basements

Every shape is possible due to optimal system grid and wide range of accessories



The panels...

AL 2000
ALU



CORNERS &
COMPENSATION PANELS



ST 2000
STEEL



Panel Height 2,70m

Item	m ²	weight
AL 2000 panel 270/90	2,43 m ²	52,0 kg
AL 2000 panel 270/60	1,62 m ²	40,0 kg
AL 2000 panel 270/50	1,35 m ²	36,0 kg
AL 2000 panel 270/45	1,22 m ²	33,0 kg
AL 2000 panel 270/40	1,08 m ²	30,0 kg
AL 2000 panel 270/30	0,81 m ²	25,0 kg
AL 2000 panel 270/25	0,68 m ²	23,0 kg
AL 2000 UNI panel 270/90	2,43 m ²	59,0 kg

Item	weight
Outside corner, 270cm, galvanized	26,0 kg
Inside corner, 270/20/20cm, galvanized	53,0 kg
Articulated inside corner	63,0 kg
Articulated outside corner	40,0 kg
Wall compensation 270/10cm	17,0 kg
Wall compensation 270/5cm	12,0 kg
Wall compensation 270/3cm	11,0 kg
Wall compensation 270/2cm	10,0 kg
Circular forming plate 270/25cm	56,0 kg
Circular forming plate 270/20cm	54,0 kg
Dismantling device 270/10cm	46,0 kg

Item	m ²	weight
ST 2000 panel 270/90	2,43 m ²	79,5 kg
ST 2000 panel 270/60	1,62 m ²	64,0 kg
ST 2000 panel 270/50	1,35 m ²	55,0 kg
ST 2000 panel 270/45	1,22 m ²	50,0 kg
ST 2000 panel 270/40	1,08 m ²	46,0 kg
ST 2000 panel 270/30	0,81 m ²	41,0 kg
ST 2000 panel 270/25	0,68 m ²	37,0 kg
ST 2000 UNI panel 270/90	2,43 m ²	83,0 kg

Panel Height 1,35m

Item	m ²	weight
AL 2000 panel 135/90	1,22 m ²	27,5 kg
AL 2000 panel 135/60	0,81 m ²	20,0 kg
AL 2000 panel 135/50	0,68 m ²	18,0 kg
AL 2000 panel 135/45	0,61 m ²	16,0 kg
AL 2000 panel 135/40	0,54 m ²	15,0 kg
AL 2000 panel 135/30	0,41 m ²	12,0 kg
AL 2000 panel 135/25	0,34 m ²	10,0 kg
AL 2000 UNI panel 135/90	1,22 m ²	29,0 kg

Item	weight
Outside corner, 135cm, galvanized	13,5 kg
Inside corner, 135/20/20cm, galvanized	27,0 kg
Articulated outside corner	21,0 kg
Articulated inside corner	32,0 kg
Wall compensation 135/5cm	6,0 kg

Item	m ²	weight
ST 2000 panel 135/90	1,22 m ²	42,0 kg
ST 2000 panel 135/60	0,81 m ²	31,0 kg
ST 2000 panel 135/50	0,68 m ²	29,0 kg
ST 2000 panel 135/45	0,61 m ²	27,0 kg
ST 2000 panel 135/40	0,54 m ²	25,0 kg
ST 2000 panel 135/30	0,41 m ²	22,0 kg
ST 2000 panel 135/25	0,34 m ²	18,0 kg
ST 2000 UNI panel 135/90	1,22 m ²	43,0 kg

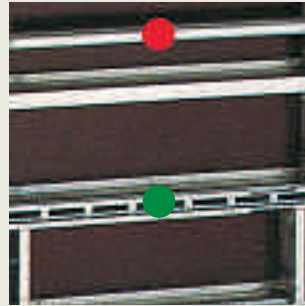
System 2000 «



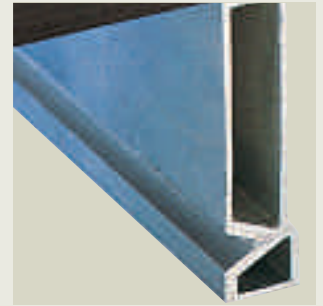
Coupler
galvanized
for ST and AL 2000



ST 2000 hand grips
4 hand grips per panel
easy handling without
crane



AL 2000
Easy handling due to
● handle bars
● plane profiles



**Hollow Profile
AL 2000**
- extremely light
- extremely stiff
- minimized volume



Waler
100 and 150cm
galvanized



RS clamp
galvanized



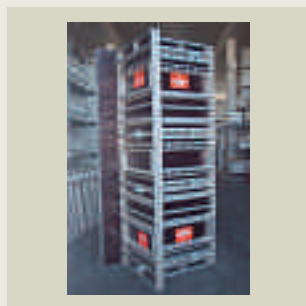
**System 2000
adjustable clamp**
galvanized



Stop-end coupler
for walls up to 40cm
galvanized



**Push-pull prop &
Push-pull prop "G"**
galvanized, and
concreting platform



UNI panels
for concreting columns



Articulated corner
galvanized
(70° - 180°)



**Circular forming
plate**
galvanized
(min. radius 1,80m)

System parts



Combi plate
galvanized



Tie rod
galvanized



Crane hook
load capacity 1000kg
galvanized



**Wall thickness
compensation**
270/10 270/5cm
270/3 270/2cm
galvanized



**Concreting
brackets with
guardrails**



Brace frame "L"
galvanized



Brace frame "S"
up to 6,0m
galvanized



Spacer tube
waterproof



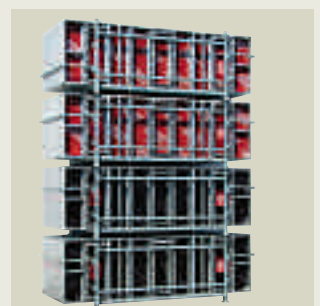
Release agent



UNI Container
stackable
galvanized



Accessory box
galvanized



Pallet for panels
galvanized

System 2000 «



AL 2000
Project
WALDORF school
Salzburg, Austria



ST 2000
Project
"BIOENERGIE
STRASSER"
Neukirchen,
Austria

...at the site



ST 2000
Project CONCEFA
Sibiu, Romania

AL 2000
Circular formwork
Project "METEOR"
Moscow, Russia



RINGER - 70 YEARS OF EXPERT KNOWLEDGE



RINGER - all you need at your site



A-4844 Regau
Römerweg 9
Austria



Tel: +43-(0)7672/72711-0
Fax: +43-(0)7672/78805
mail: verkauf@ringer.at
http: www.ringer.at

RINGER
Die Schalungsprofis